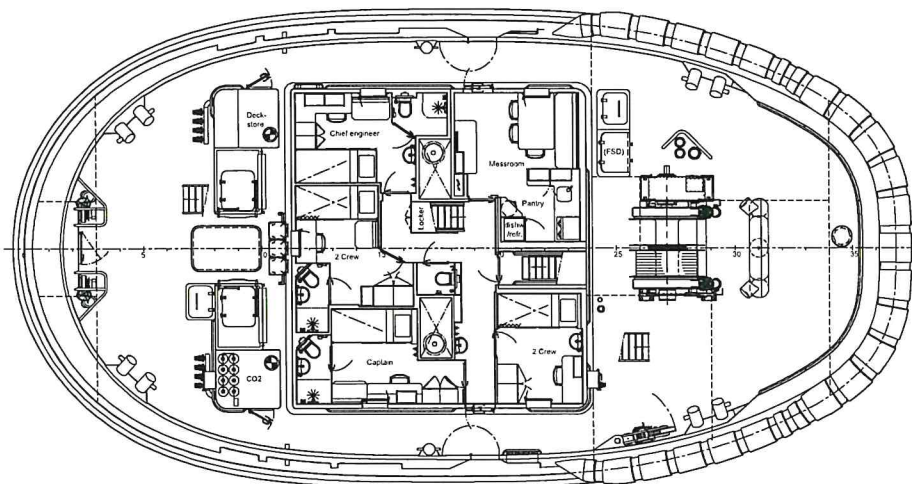
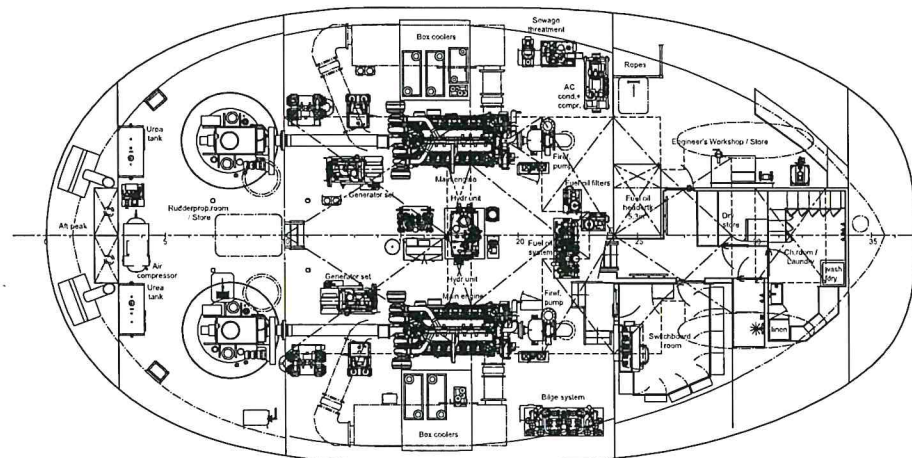


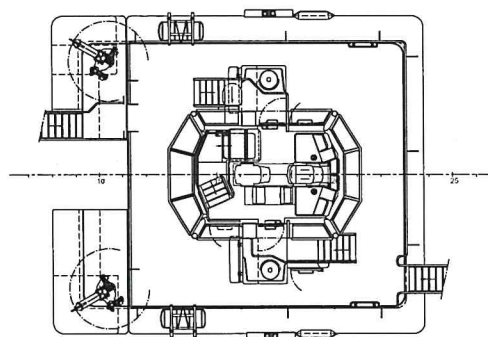
Main deck



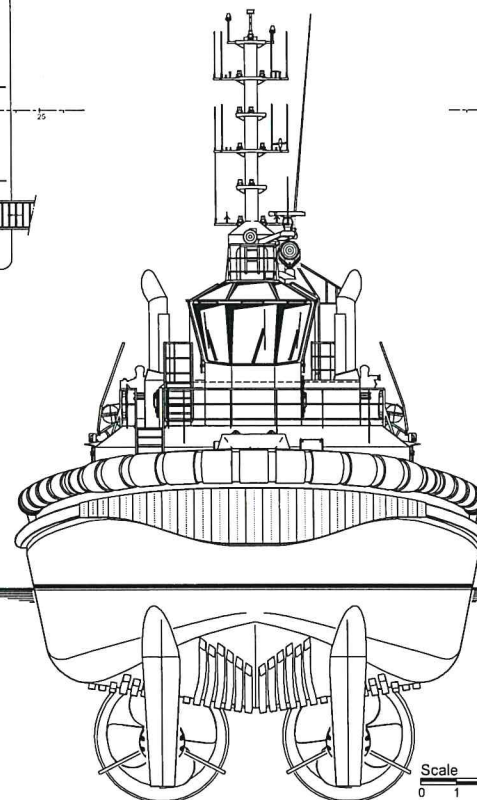
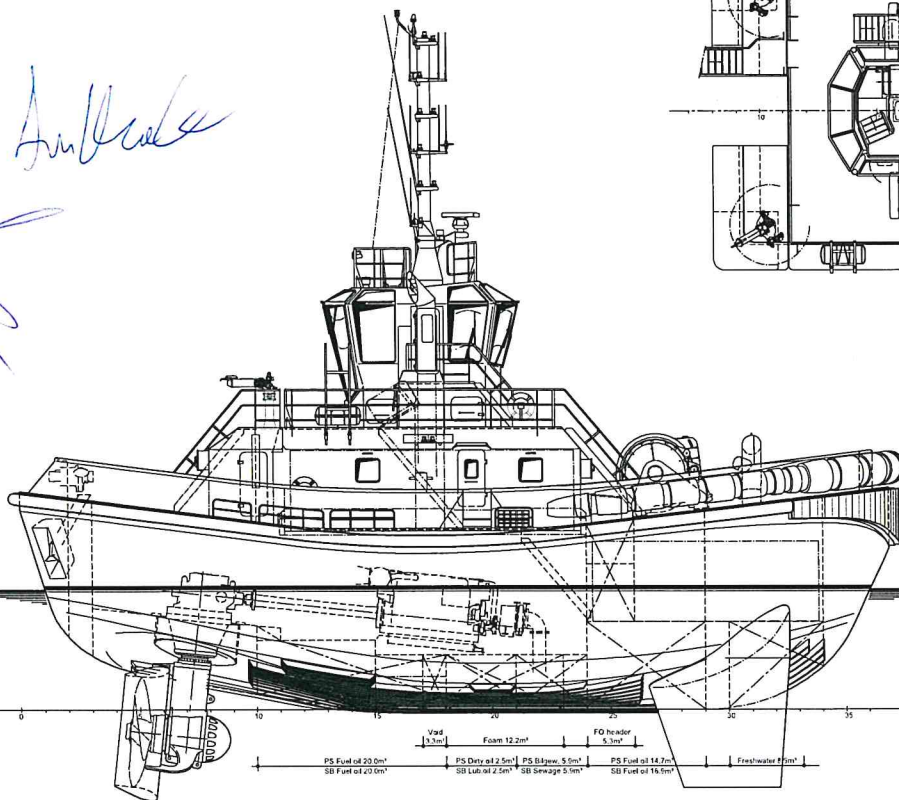
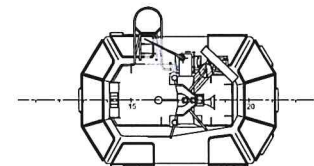
Below Main deck



Bridge deck



Top deck



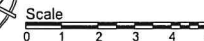
Damen
R S D Tug[®] 2513 Twin Fin[®]



Main dimensions:

Length o.a.	24.73 m
Beam o.a.	13.13 m
Depth at sides	4.95 m
Draught aft (98% loading condition)	6.20 m

DAMEN DAMEN SHIPYARD GROUP		Project ID: 519022	
Drawn: AG	Scale: 1:50	Checked: E. Tukker	Project: Plan
Units: mm	Drawn: E. Tukker	Approved: S. Cho - Project Manager	Drawn: E. Tukker
Checked: E. Tukker	Checked: E. Tukker	Approved: S. Cho - Project Manager	Drawn: E. Tukker
Drawing No: 280170 - RSD 2513 Twin Fin	Scale: - GA	Project: 001	Date: 2024.03.04
IT'S better		COPYRIGHT DAMEN SHIPYARD GROUP	



Handwritten notes:
 Air Deck
 M

Vsd 1.5m
 PS Fuel oil 20.0m³
 SB Fuel oil 20.0m³
 PS Dmv at 2.5m³
 SB Lub oil 2.5m³
 PS Bk jaw 3.5m³
 PS Fuel oil 14.7m³
 SB Fuel oil 14.7m³
 FO header 4.3m³
 FCB storage 5.1m³
 Freshwater 7m³